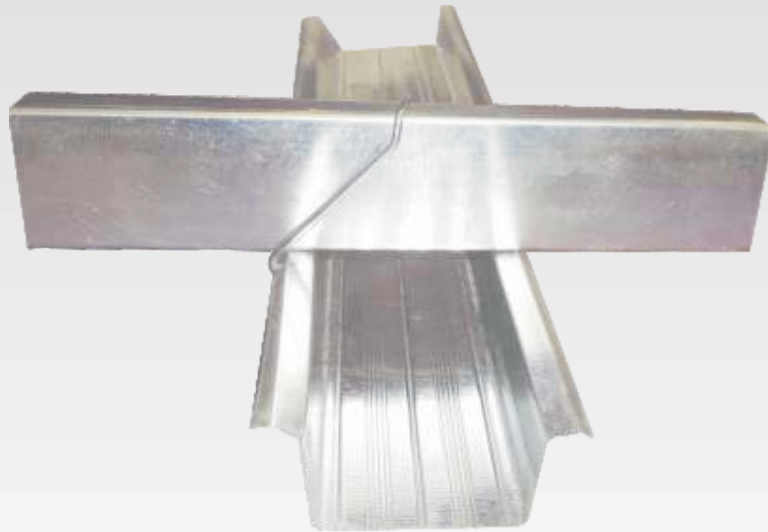


EKO+Frame™

A HIGH QUALITY CEILING SYSTEM



STRONGER

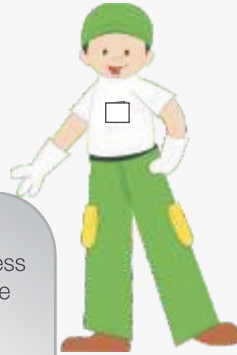


DURABLE



ECONOMICAL

Why to use EKO*Frame™ instead of other ceiling system ?



+ Made from 1st grade steel.

Procured directly through steel mill .The consistency of thickness and vital parameters are checked (chemical/mechanical) before making into channels.

+ Self manufacturing of Channels.

The roll forming line is situated at Boral's, Khushkhera plant where these channels are made under strict quality control.

+ Coating of minimum 120 GSM maintained.

The Zinc coating on steel is maintained at minimum 120 GSM (inclusive of both the sides) to prevent rusting.

+ Line Knurling on Ceiling Section.

Special line knurling design which helps to improve the rigidity of frame and also increases the screw holding capacity.

+ Printing of EKO*Frame™ on channels.

This ensures genuineness of the channels and prevents usage of duplicate at the job site channels in installation. This also helps in easy identification and inspection of the system.

+ As per conventional system.

The U shaped Intermediate section and Inverted Hat shaped Ceiling section ensures ,ease of use in installation of frame. This is effectively connected by Wire Connect Clip to ensure rigid and strong connection .

+ Certification and Testing.

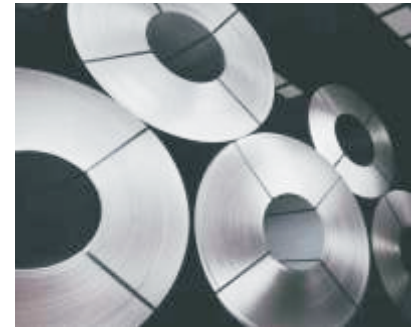
EKO*Frame™ ceiling system is designed and tested with a pull out load of at least 3 times more than the safety factor for which it is being intended to use.

+ Central Line in Furring section.

The sight line is prominent in EKO*Frame™ Ceiling section which enables the installer to properly align the Gypsum Board during screw fixing.

+ Change in ceiling level can be done easily with EKO*Frame™ with minimum effort.

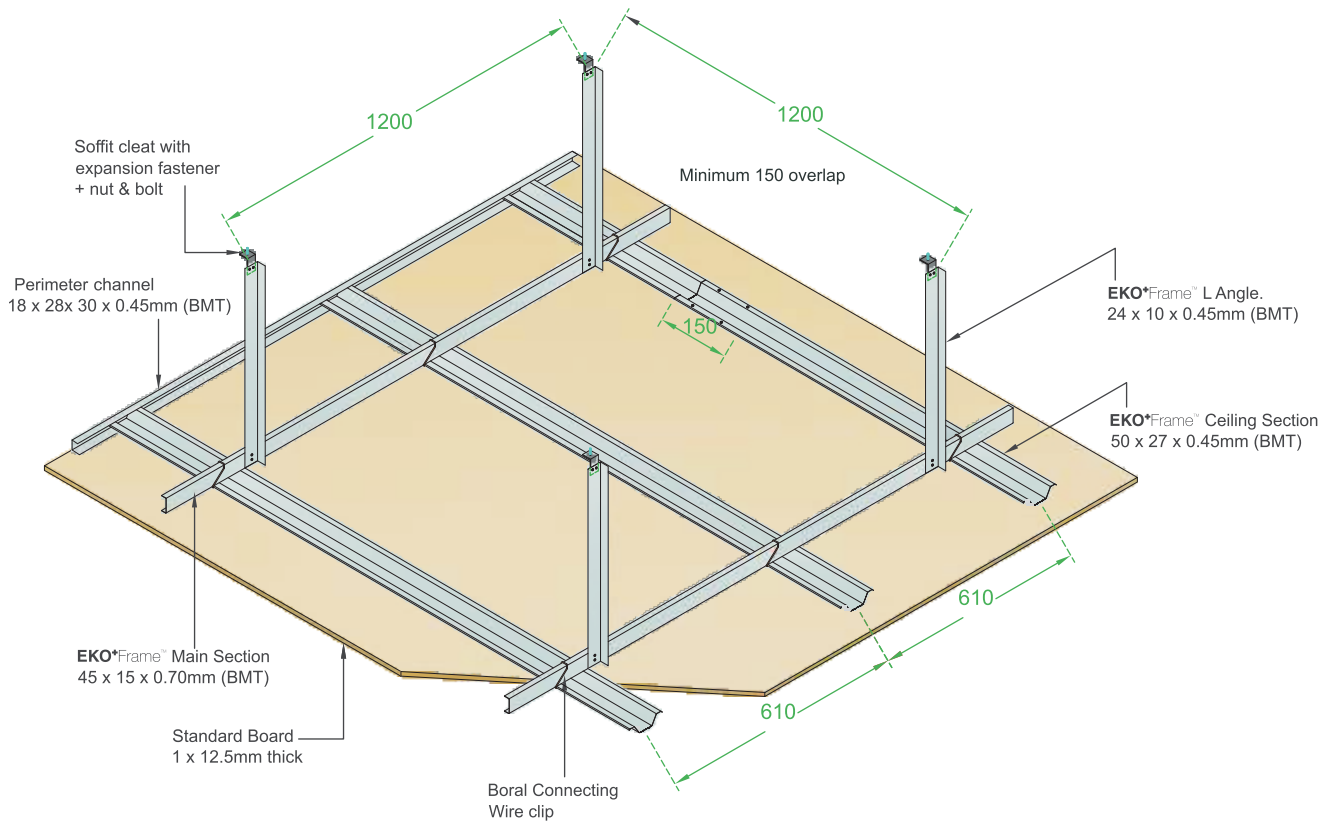
The step ceiling and other design can be done using these frames.



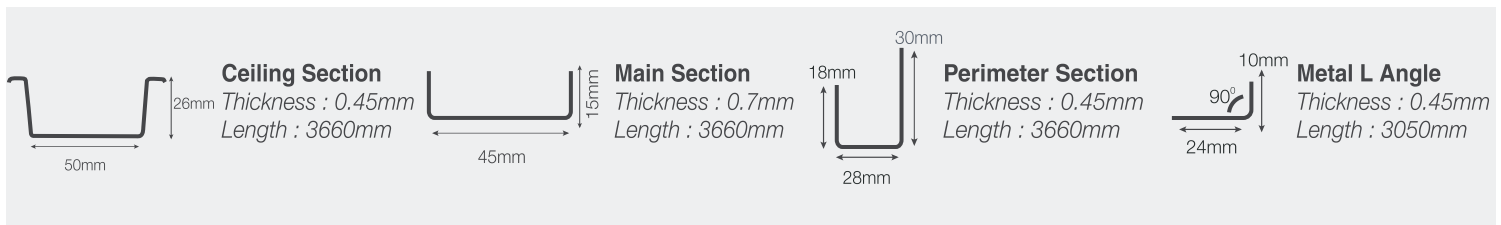
EKO*Frame™ Vs OTHER METAL AVAILABLE IN MARKET

Quality	Galvanisation	Manufacturing	Base Raw Material	Knurling
EKO*Frame™	120 GSM	Own manufacturing with strict quality control.	Grade 1 hot dipped galvanised coils as per IS277:2003 is used.	Line Knurling on the ceiling section.
Other Brand	60-100 GSM	Dubious manufacturing with less quality control.	Raw Material quality is inconsistent and does not adhere to any standards.	Knurling is very less or invisible.
Advantage of EKO*Frame™	Better rust resistant due to more galvanisation.	Precision of dimensions Straightness of profiles.	Basic Raw material quality is confirmed.	Screw holding capacity due to uniform knurling.

EKO*Frame™ CEILING SYSTEM



PROFILE OF THE SECTION



EKO*Frame™ CEILING SYSTEM COMPONENTS



EKO*Frame™

EKO*Frame™ Ceiling system has a wide range of application including both commercial and residential. It is ideally suited where services are accommodated. It can be used to both upgrade and protect existing ceiling structures.

All ceiling profiles are manufactured as per IS 277: 2003 from pre galvanized material to 120 GSM of coating.

Key benefits :-

- Quick and simple to construct and install.
- System is suitable for any type of plasterboard.
- Products can be easily cut to required length using cutting tools.
- Insulation for improved sound and thermal properties is easy to install.
- Can be used to create a perfect finish to receive different types of decorative finishes.